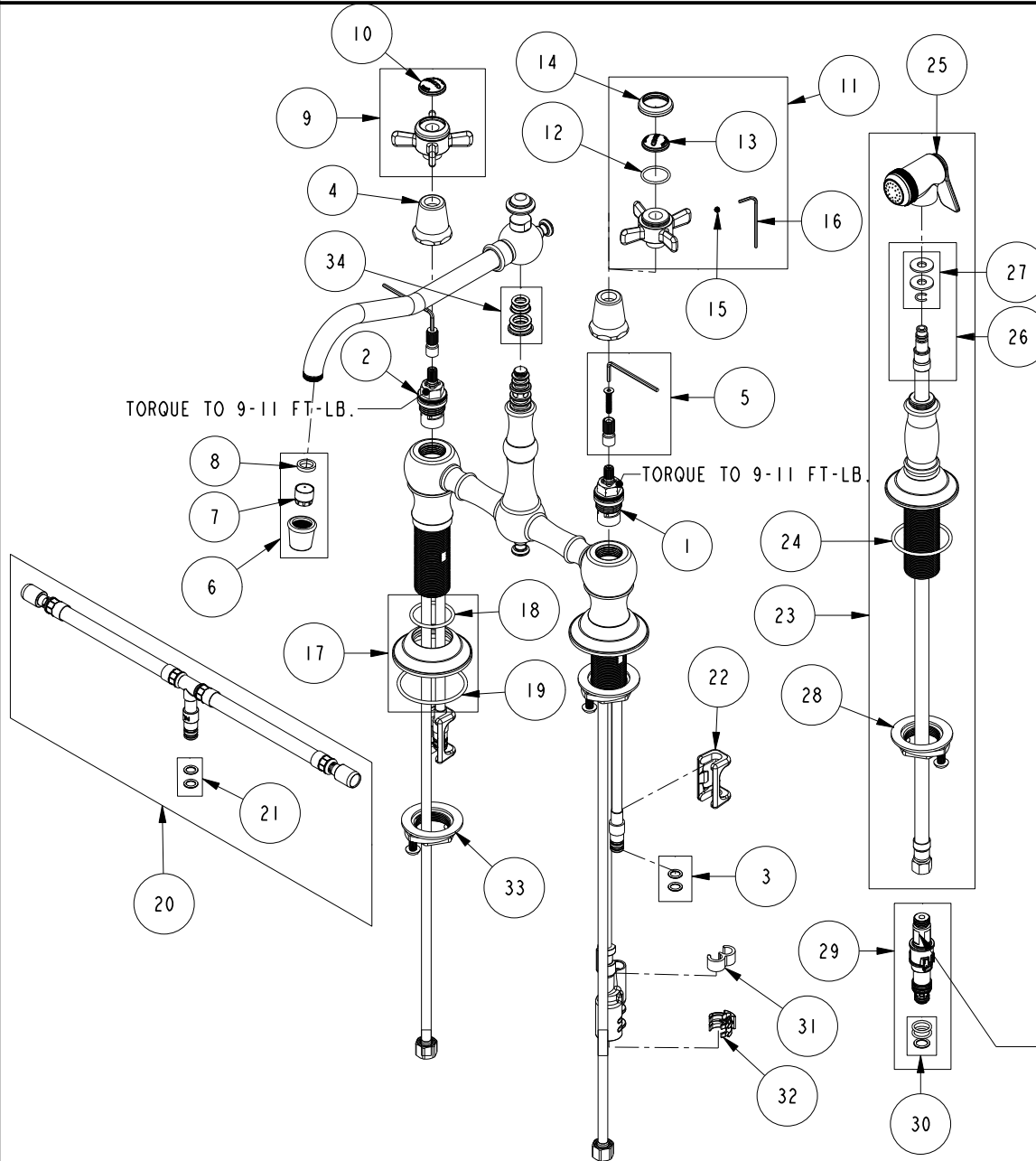


REPLACEMENT PARTS



| ITEM | PT/ASSY | SPECIFY FINISH | DESCRIPTION |
|------|---------|----------------|---|
| 1 | 1-005 | | C/S VALVE CARTRIDGE - COLD |
| 2 | 1-006 | | C/S VALVE CARTRIDGE - HOT |
| 3 | 1-399 | | O-RING KIT FOR SPOUT PEX CONNECTION |
| 4 | 13854 | YES | HANDLE BONNET - TUB FILLER |
| 5 | 10-304 | | CARTRIDGE STEM ADAPTER KIT |
| 6 | 2-259 | YES | AERATOR ASM |
| 7 | 11917 | | AERATOR INSERT TT, 1.75 GPM |
| 8 | 91265 | | WSHR, 11 ID X 15 OD X 2.8 MM THK, FLT, RUBBER NSF 61 APPR |
| 9 | 2-114 | YES | THIN BLADE X - HANDLE HOT |
| 10 | 10816 | | PORC BUTTON - CHAUD (HOT) |
| 11 | 2-115 | YES | THIN BLADE X - HANDLE COLD |
| 12 | 91023 | | O-RING, #2- 019, EPDM, 65-75 DURO, NSF 61 |
| 13 | 10815 | | PORC BUTTON - FROID (COLD) |
| 14 | 10814 | YES | BEZEL |
| 15 | 92000 | | SCREW 8 - 32 X 1/8 SS |
| 16 | 10192 | | HEX KEY TOOL, #8 5/64 |
| 17 | 20-701 | YES | ESCUTCHEON ASM. |
| 18 | 91305 | | O-RING, #2- 124, EPDM, 65-75 DURO, NSF 61 |
| 19 | 91752 | | O-RING, #2- 137, EPDM, 50 DURO |
| 20 | 1-777 | | TEE HOSE ASSY |
| 21 | 1-399 | | O-RING KIT FOR SPOUT PEX CONNECTION |
| 22 | 91568 | | RETAINER CLIP |
| 23 | 129 | YES | KITCHEN SPRAY HEAD |
| 24 | 91762 | | O-RING, #2-132, EP, 50 DURO - GREY |
| 25 | 2-119B | YES | SPRAY HEAD ASM |
| 26 | 1-778 | | SIDE SPRAY HOSE ASSY |
| 27 | 1-397 | | SIDE SPRAY WASHERS |
| 28 | 1-393 | | 1-1/8 18 UNEF MOUNTING KIT |
| 29 | 10-303 | | PEX DIVERTER ASM FOR SIDE SPRAY HOSE |
| 30 | 1-398 | | O-RING KIT FOR SIDE SPRAY PEX DIVERTER |
| 31 | 91811 | | TEE HOSE CLIP |
| 32 | 91812 | | DIVERTER CLIP |
| 33 | 1-393 | | 1-1/8 18 UNEF MOUNTING KIT |
| 34 | 10-302 | | SPOUT O-RING AND WASHER KIT |

KITCHEN BRIDGE FAUCET W/ SPRAY
945-1

REV M EN-4731 11/15/23 APPROVED RS

NEWPORT BRASS.

t: 949.417.5207 | www.newportbrass.com